

## Apprenticeship Standard - L2 Supply Chain Warehouse Operation



### What is this Apprenticeship about?

This Apprenticeship will help to upskill existing staff working within the sector or we can help you to recruit new Apprentices.

Apprentices will gain the skills to manage the movement of goods in a warehouse environment, safely operating machinery, maintaining stock records & documentation.

We will design a tailored training package, precisely matched to your needs, resulting in a well-trained, up to date workforce. Delivery will be in the workplace, away from the workstation, providing a cost effective method of training & upskilling your staff. An industry specialist Assessor will support you & your Apprentice throughout the process.

### How is this Apprenticeship delivered?

On and off the job in the workplace

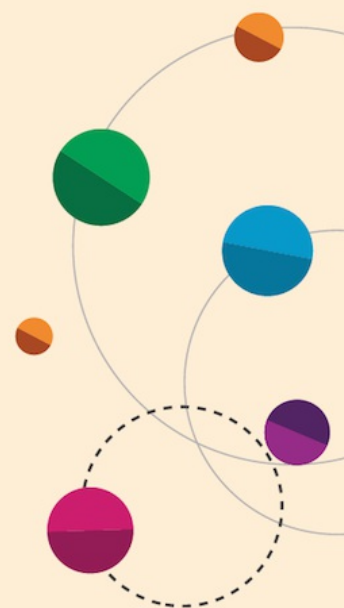
### What else do I need to know?

Regular intakes throughout the year, monthly

**Course code**  
**ST0259/A1**

**No. of weeks/duration**  
**Typically 13 months**

**Location**  
**Workplace**



**For the latest fees visit:**  
[www.stokecoll.ac.uk/  
employers/apprenticeships/](http://www.stokecoll.ac.uk/employers/apprenticeships/)

**For more information:**  
**Call 01782 603603 Email [business@stokecoll.ac.uk](mailto:business@stokecoll.ac.uk)**  
**Visit [www.stokecoll.ac.uk/employers/apprenticeships/](http://www.stokecoll.ac.uk/employers/apprenticeships/)**

