

Apprenticeship Standard - L3 Senior Healthcare Support Worker



What is this Apprenticeship about?

This Apprenticeship will help to upskill existing staff or we can help you recruit new apprentices who wish to pursue this career.

Apprentices will gain the skills to carry out a range of clinical and non-clinical healthcare or therapeutic tasks, under the direct or indirect supervision of the registered healthcare practitioner. Providing high quality, compassionate healthcare, following standards, policies or protocols and always acting within the limits of your competence.

Our tailored training will precisely match your needs, resulting in a well-trained, capable workforce. Delivery will be a mix of day release using our state of the art facilities & in your workplace, providing a cost effective method of training & upskilling your staff. An industry specialist Assessor will support you & your Apprentice during the process.

How is this Apprenticeship delivered?

Both off and on the job, within the workplace. Apprentices will also have the opportunity to use the state of the art facilities and equipment at Stoke on Trent College.

What else do I need to know?

Regular starts throughout the year – bi-monthly

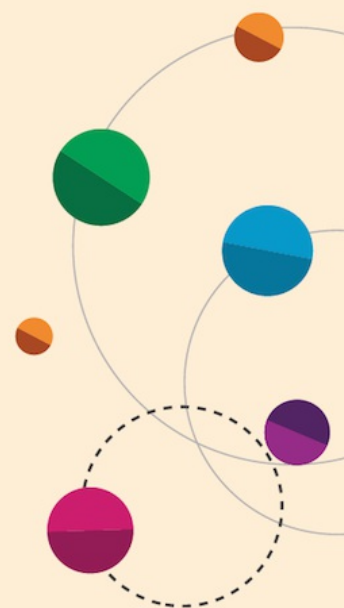
There are 5 optional routes at Stoke on Trent College within this Standard:

1. adult nursing support,
3. theatre support,
4. mental health support,
5. children and young people support,
6. allied health profession

Course code
ST021701/V1

No. of weeks/duration
Typically 18 months

Location
Workplace



For the latest fees visit:
[www.stokecoll.ac.uk/
employers/apprenticeships/](http://www.stokecoll.ac.uk/employers/apprenticeships/)

For more information:
Call 01782 603603 Email business@stokecoll.ac.uk
Visit www.stokecoll.ac.uk/employers/apprenticeships/

