

## Apprenticeship Standard - L2 Healthcare Support Worker



### What is this Apprenticeship about?

This Apprenticeship will help to upskill existing staff or we can help you recruit new apprentices who wish to pursue this career.

Apprentices will gain the skills to carry out well-defined routine clinical & non clinical duties like monitoring the condition of patients, checking on their overall progress, comfort & wellbeing & updating records.

Our tailored training will precisely match your needs, resulting in a well-trained, capable workforce. Delivery will be a mix of day release using our state of the art facilities & in your workplace, providing a cost effective method of training & upskilling your staff. An industry specialist Assessor will support you & your Apprentice during the process.

### How is this Apprenticeship delivered?

On & off the job training within your workplace.

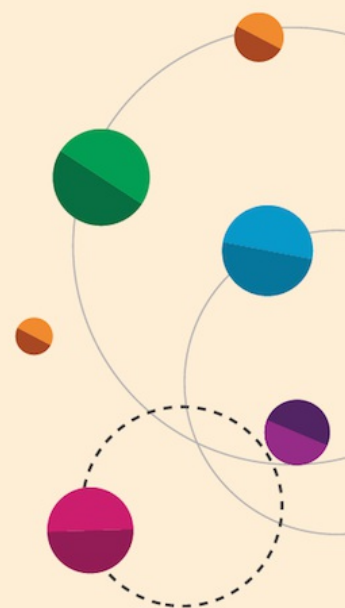
### What else do I need to know?

Regular intakes throughout the year, frequency depends on volume of applications.

**Course code**  
**ST0216/A1**

**No. of weeks/duration**  
**At least 13 months**

**Location**  
**Workplace**



**For the latest fees visit:**  
[www.stokecoll.ac.uk/  
employers/apprenticeships/](http://www.stokecoll.ac.uk/employers/apprenticeships/)

**For more information:**  
**Call 01782 603603 Email [business@stokecoll.ac.uk](mailto:business@stokecoll.ac.uk)**  
**Visit [www.stokecoll.ac.uk/employers/apprenticeships/](http://www.stokecoll.ac.uk/employers/apprenticeships/)**

