

## Apprenticeship Standard (2) Carpentry and Joinery



### What is this Apprenticeship about?

This Apprenticeship will help to upskill existing staff working within the sector or we can help you recruit apprentices wishing to pursue this career.

Apprentices will gain a range of skills working either on a construction site or in domestic & commercial premises, to given specifications, or in a joiners shop producing wood products, to given specifications.

Our tailored training will precisely match your needs, resulting in a well-trained, skilled workforce. Delivery will be a mix of block release using our new state of the art facilities & in your workplace, providing a cost effective means of upskilling your staff. An industry specialist Assessor will support you & your Apprentice throughout the process.

### How is this Apprenticeship delivered?

Primarily on and off the job in the workplace, plus weekly day release to Stoke on Trent College

### What else do I need to know?

Main intake is September, with options for mid year starts – January / April subject to numbers

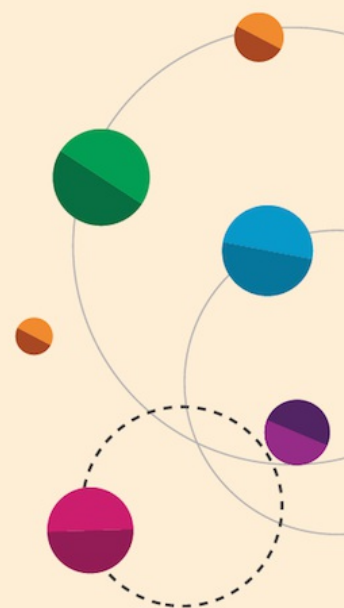
This apprenticeship has two options in which to specialise:

- Site Joinery
- Bench Joinery

**Course code**  
ST0264/A1

**No. of weeks/duration**  
Typically 18 months

**Location**  
Burslem Campus / Workplace



**For the latest fees visit:**  
[www.stokecoll.ac.uk/  
employers/apprenticeships/](http://www.stokecoll.ac.uk/employers/apprenticeships/)

**For more information:**  
Call **01782 603603** Email [business@stokecoll.ac.uk](mailto:business@stokecoll.ac.uk)  
Visit [www.stokecoll.ac.uk/employers/apprenticeships/](http://www.stokecoll.ac.uk/employers/apprenticeships/)

