

L3 Advanced Apprenticeship Construction Building - Trowel Occupations route



What is this Apprenticeship about?

This Apprenticeship will help to upskill existing staff working within the sector or we can help you recruit apprentices wishing to pursue this career.

Apprentices will gain a range of skills on construction sites to work in the bricklaying trade.

Our tailored training will precisely match your needs, resulting in a well-trained, skilled workforce. Delivery will be a mix of day release using our new state of the art facilities & at your workplace, providing a cost effective means of upskilling your staff. An industry specialist Assessor will support you & your Apprentice throughout the process.

Our Apprentices successfully participate in competitions such as World Skills.

How is this Apprenticeship delivered?

On and off the job training in the workplace, with weekly day release at Stoke on Trent College

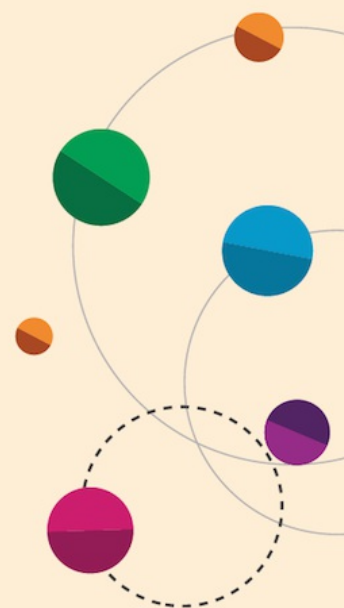
What else do I need to know?

Main intake is September, with options for mid year starts – January / April subject to numbers

Course code
FR0437601/V1

No. of weeks/duration
Typically 24 months

Location
Burslem Campus / Workplace



For the latest fees visit:
[www.stokecoll.ac.uk/
employers/apprenticeships/](http://www.stokecoll.ac.uk/employers/apprenticeships/)

For more information:
Call **01782 603603** Email **business@stokecoll.ac.uk**
Visit **www.stokecoll.ac.uk/employers/apprenticeships/**

