

## L2 Apprenticeship Construction Building - Wood Machining route



### What is this Apprenticeship about?

This Apprenticeship will help to upskill existing staff working within the sector or we can help you recruit apprentices wishing to pursue this career.

Apprentices will gain a range of skills working in a wood machine shop producing sawn wood products, to given specifications. Skilled use of machinery to produce products will allow for increased productivity.

Our tailored training will precisely match your needs, resulting in a well-trained, skilled workforce. Delivery will be a mix of day release using our new state of the art facilities & in the workplace, providing a cost effective means of upskilling your staff. An industry specialist Assessor will support you & your Apprentice throughout the process.

### How is this Apprenticeship delivered?

On and off the job training in the workplace, also weekly day release at Stoke on Trent College

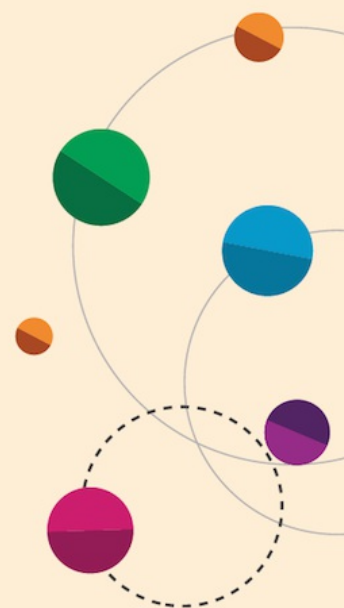
### What else do I need to know?

Main intake is September, with options for mid year starts – January / April subject to numbers

**Course code**  
FR0437605/A1

**No. of weeks/duration**  
Typically 24 months

**Location**  
Burslem Campus / Workplace



**For the latest fees visit:**  
[www.stokecoll.ac.uk/  
employers/apprenticeships/](http://www.stokecoll.ac.uk/employers/apprenticeships/)

**For more information:**  
Call **01782 603603** Email **business@stokecoll.ac.uk**  
Visit **[www.stokecoll.ac.uk/employers/apprenticeships/](http://www.stokecoll.ac.uk/employers/apprenticeships/)**

