

## L3 Advanced Apprenticeship - Construction Technical



### What is this Apprenticeship about?

This Apprenticeship will help to upskill existing staff working within the sector or we can help you recruit apprentices wishing to pursue this career.

Apprentices will gain a range of skills on construction sites, specialising in civil engineering, built environment & design or contracting operations.

Our tailored training will precisely match your needs, resulting in a well-trained, skilled workforce. Delivery will be a mix of day release using our new state of the art facilities & at your workplace, providing a cost effective means of upskilling your staff. An industry specialist Assessor will support you & your Apprentice throughout the process.

### How is this Apprenticeship delivered?

On and off the job training in the workplace, with weekly day release to Stoke on Trent College

### What else do I need to know?

Main intake is September, with options for mid year starts – January / April subject to numbers

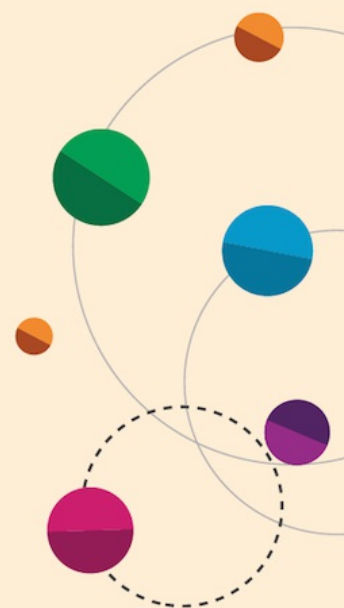
There are several routes to this Framework to specialise in:

- civil engineering,
- built environment & design
- contracting operations

**Course code**  
FR04393/V1

**No. of weeks/duration**  
Typically 22 months

**Location**  
Burslem Campus / Workplace



**For the latest fees visit:**  
[www.stokecoll.ac.uk/  
employers/apprenticeships/](http://www.stokecoll.ac.uk/employers/apprenticeships/)

**For more information:**  
Call **01782 603603** Email [business@stokecoll.ac.uk](mailto:business@stokecoll.ac.uk)  
Visit [www.stokecoll.ac.uk/employers/apprenticeships/](http://www.stokecoll.ac.uk/employers/apprenticeships/)

